

PRODUCTS RANGE

SERIES TA/TD/TX/TTL



Turning the world

THE POWER OF A MANUFACTURER

SINGLE TURRET LATHES

MULTI-TURRET LATHES

TA SERIES

TX SERIES



Z400 MODEL



Z640 MODEL



Z1100 MODEL



Y3 MODEL



Y2 QUATTRO MODEL

TD SERIES

TTL SERIES



Z800 MODEL



Z1350 MODEL



TTL MODEL



Z2200 MODEL



Z3200 MODEL

AUTOMATION WITH INTEGRATED GANTRY ROBOT LOADERS FOR INCREASED PRODUCTIVITY

AUTOMATION OF SHORT AND LONG BATCHES

GL20II MODEL

WORKSTOCKER FOR BILLETS WS-280x400x14 MODEL

WORKSTOCKER FOR SHAFTS WS-700 MODEL



TA SERIES

PRECISION AND RELIABILITY

TA SERIES

Z400 MODEL

TURRET WITH A BUILT-IN MOTOR WITH 12,000 rpm



Z640 MODEL

PRISMATIC GUIDE WAYS



Z1100 MODEL

INTEGRATED SPINDLES



GL20II MODEL

GANTRY ROBOTS



TECHNICAL DATA

		TA15		TA20		TA25		TA30																			
		TA15	TA15M	TA15Y	TA15S	TA15MS	TA15YS	TA20	TA20M	TA20Y	TA20S	TA20MS	TA20YS	TA25	TA25M	TA25Y	TA25S	TA25MS	TA25YS	TA30	TA30M	TA30Y	TA30S	TA30MS	TA30YS		
GENERAL DATA	Maximum diameter of swinging over bed (mm)	760		760		760		760																			
	Maximum diameter of swinging over slides (mm)	600		600		600		600																			
	Maximum turning diameter (mm)	460		460		460		460																			
	Distance between spindle and tailstock centre (mm)	/400	490	-	473	-	473	-	449	-																	
		/640	730	-	713	-	713	-	689	-																	
		/1100	1190	-	1173	-	1173	-	1149	-																	
Distance between centre of spindles (mm)	/640	-	666	-	649	-	649	-	625																		
	/1100	-	1126	-	1109	-	1109	-	1085																		
Y-axis travel (mm)	-	-	+70 -50	-	-	+70 -50	-	-	+70 -50	-	-	+70 -50	-	-	+70 -50	-	-	+70 -50	-	-	+70 -50	-	-	+70 -50	-	-	
SPINDLE	Maximum speed (rpm)	4500		4000		4000		3500																			
	Maximum bar diameter	52		66		66		82																			
	Chuck diameter	175/210		210		250/210		254/315																			
	Chuck bore	56/52		66		66		82																			
	Spindle power (kW) (max/S6 40%)	14/8		22/15		35/19		42/27																			
	Turning torque (Nm)	292 (max) 153 (S6 40%)		366 (max) 286 (S6 40%)		900 (max) 363 (S6 40%)		1020 (max) 720 (S6 40%)																			
TURRET	Number of positions					12																					
	Turning speed (rpm)					12000																					
	Power (kW) (max/S1)					11,3/8,1																					
	Maximum torque (Nm)					75																					
WEIGHT	Total weight (kg)	/400	6600 (*)	-	6800 (*)	-	6800 (*)	-	7000 (*)	-																	
	/640	7000 (*)	7400 (*)	7100 (*)	7500 (*)	7100 (*)	7500 (*)	7300 (*)	7800 (*)																		
	/1100	7800 (*)	8200 (*)	7900 (*)	8300 (*)	7900 (*)	8300 (*)	8000 (*)	8700 (*)																		

(*) Approximate weights. Due to constant development of our products all specifications given here in are subject to change without notice.

TD SERIES

HIGH PERFORMANCE

TD SERIES



Z800 MODEL

OIL-COOLED
BALLSCREW NUTS



Z1350 MODEL

LASER COMPENSATION
ON ALL AXIS



Z800-GL20II MODEL

EASY CONVERSATIONAL
PROGRAMMING SYSTEM

TECHNICAL DATA

		TD15		TD20		TD25		TD30		TD35		TD45		TD55															
		TD15M	TD15Y	TD15MS	TD15YS	TD20M	TD20Y	TD20MS	TD20YS	TD25M	TD25Y	TD25MS	TD25YS	TD30M	TD30Y	TD30MS	TD30YS	TD35M	TD35Y	TD35MS	TD35YS	TD45M	TD45Y	TD45MS	TD45YS	TD55M	TD55Y	TD55MS	TD55YS
GENERAL DATA	Maximum diameter of swinging over bed (mm)	950																											
	Maximum turning diameter (mm)	550																											
GENERAL DATA	Distance between spindle and tailstock centre (mm)	/800	915	-	898	-	898	-	874	-	850	-	850	-	848	-													
	Distance between centre of spindles (mm)	/1350	1465	-	1448	-	1448	-	1424	-	1400	-	1400	-	1398	-													
GENERAL DATA	Distance between centre of spindles (mm)	-	826	-	792	-	792	-	768	-	760	-	744	-	742	-													
	Y-axis travel (mm)	-	+80 -60	-	+80 -60	-	+80 -60	-	+80 -60	-	+80 -60	-	+80 -60	-	+80 -60	-	+80 -60	-	+80 -60	-	+80 -60	-	+80 -60	-	+80 -60	-	+80 -60	-	+80 -60
SPINDLE	Maximum speed (rpm)	4500		4000		4000		3500		3000		2200		1600															
	Maximum bar diameter	52		66		66		82		95		127		180															
	Chuck diameter	175/210		210		250/210		254/315		315		315/400		500															
	Spindle power (kW) (max./S6 40%)	14/8		22/15		35/19		40/25		48 (S3 25%) /39 (S1)		51 (S3 25%) /39 (S1)		51 (S3 25%) /39 (S1)															
	Turning torque (Nm)	292 (max)		366 (max)		900 (max)		1020 (max)		1500 (max)		3600 (max)		3600 (max)															
TURRET	Number of driven tools	-	16 [12]	-	16 [12]	-	16 [12]	-	16 [12]	-	16 [12]	-	16 [12]	-	16 [12]	-	16 [12]	-	16 [12]	-	16 [12]	-	16 [12]	-	16 [12]	-	16 [12]	-	16 [12]
	Turning speed (rpm)	-	12000	-	12000	-	12000	-	12000	-	12000	-	12000	-	12000	-	12000	-	12000	-	12000	-	12000	-	12000	-	12000	-	12000
	Power (kW) (max./S1)	-	11,3/8,1 (13,7/11)	-	11,3/8,1 (13,7/11)	-	11,3/8,1 (13,7/11)	-	11,3/8,1 (13,7/11)	-	13,7/11 (11,3/8,1)	-	13,7/11 (11,3/8,1)	-	13,7/11 (11,3/8,1)	-	13,7/11 (11,3/8,1)	-	13,7/11 (11,3/8,1)	-	13,7/11 (11,3/8,1)	-	13,7/11 (11,3/8,1)	-	13,7/11 (11,3/8,1)	-	13,7/11 (11,3/8,1)	-	13,7/11 (11,3/8,1)
WEIGHT	Maximum torque (Nm)	-	75 [105]	-	75 [105]	-	75 [105]	-	75 [105]	-	75 [105]	-	75 [105]	-	105 [75]	-	105 [75]	-	105 [75]	-	105 [75]	-	105 [75]	-	105 [75]	-	105 [75]	-	105 [75]
	Total weight (kg)	/800	8300(*)	8700(*)	8500(*)	8900(*)	8500(*)	8900(*)	8700(*)	9100(*)	9200(*)	9600(*)	9700(*)	10100(*)	9700(*)	10100(*)													
	/1350	9500(*)	-	9700(*)	-	9700(*)	-	9900(*)	-	10400(*)	-	10900(*)	-	10900(*)	-	10900(*)	-												

(*) Approximate weights.

Due to constant development of our products all specifications given here in are subject to change without notice.

TD SERIES

**BIG DOES
NOT MEAN
SLOW**

TD SERIES

Z2200 MODEL

GOODBYE TO OBSOLETE SPINDLES
WITH REDUCTION GEARBOXES



Z3200 MODEL

INTEGRATED SPINDLES WITH
HIGH POWER AND TORQUE



12,000 rpm / 105 Nm / 13Kw

		TD15			TD20			TD25			TD30			TD35			TD45			TD55			
		TD15	TD15M	TD15Y	TD20	TD20M	TD20Y	TD25	TD25M	TD25Y	TD30	TD30M	TD30Y	TD35	TD35M	TD35Y	TD45	TD45M	TD45Y	TD55	TD55M	TD55Y	
GENERAL DATA	Maximum diameter of swinging over bed (mm)	950																					
	Maximum turning diameter (mm)	550																					
	Distance between spindle an tailstock centre (mm)	/2200	2315			2298			2298			2274			2250			2250			2248		
		/3200	3315			3298			3298			3274			3250			3250			3248		
Distance between centre of spindles (mm)	-																						
Y-axis travel (mm)	-	-	+80 -60	-	-	+80 -60	-	-	+80 -60	-	-	+80 -60	-	-	+80 -60	-	-	+80 -60	-	-	+80 -60		
SPINDLE	Maximum speed (rpm)	4500			4000			4000			3500			3000			2200			1600			
	Maximum bar diameter	52			66			66			82			95			127			180			
	Chuck diameter	175/210			210			250/210			254/315			315/400			315/400			500			
	Spindle power (kW) (max/S6 40%)	14/8			22/15			35/19			40/25			48 (S3 25%) /39 (S1)			51 (S3 25%) /39 (S1)			51 (S3 25%) /39 (S1)			
	Turning torque (Nm)	292 (max)			366 (max)			900 (max)			1020 (max)			1500 (max)			3600 (max)			3600 (max)			
TURRET	Number of driven tools	-	16 [12]		-	16 [12]		-	16 [12]		-	16 [12]		-	12 [16]		-	12 [16]		-	12 [16]		
	Turning speed (rpm)	-	12000		-	12000		-	12000		-	12000		-	12000		-	12000		-	12000		
	Power (kW) (max/S1)	-	11,3/8,1 (13,7/11)		-	11,3/8,1 (13,7/11)		-	11,3/8,1 (13,7/11)		-	11,3/8,1 (13,7/11)		-	13,7/11 (11,3/8,1)		-	13,7/11 (11,3/8,1)		-	13,7/11 (11,3/8,1)		
	Maximum torque (Nm)	-	75 [105]		-	75 [105]		-	75 [105]		-	75 [105]		-	105 [75]		-	105 [75]		-	105 [75]		
WEIGHT	Total weight (kg)	/2200	11200(*)		11400(*)		11400(*)			11600(*)			12100(*)			12600(*)			12600(*)				
	/3200	13000(*)		13200(*)		13200(*)			13400(*)			13900(*)			14400(*)			14400(*)					

(*) Approximate weights.

Due to constant development of our products all specifications given here in are subject to change without notice.

TX SERIES

PRISMATIC GUIDE MULTI-TURRET MACHINE

TX SERIES

TX66 Y3 MODEL

HIGH PRECISION
AND PRODUCTIVITY

Y AXIS ON ALL TURRETS



TX66 Y2 MODEL

SERVO TYPE PARTS CATCHER
EXTRACTS COMPONENTS FROM
BOTH SPINDLES



TECHNICAL DATA

	TX66 Y3	TX52 Y3	TX66 Y2 Quattro	TX52 Y2 Quattro
GENERAL DATA	Maximum turning diameter (mm)	255	255	255
	Distance between centre of spindles (mm)	639	647	639
LEFT SPINDLE STOCK	Maximum speed (rpm)	4000	5000	4000
	Spindle nose	ASA 8"A2	ASA 6"A2	ASA 8"A2
	Maximum bar diameter	66	52	66
	Chuck diameter	210	175	210
	Spindle power (kW) (S2 30min/S1)	18,5/15	18,5/15	18,5/15
Turning torque (Nm) (S2 30min/S1)	165/135	140/115	165/135	
RIGHT SPINDLE STOCK	Maximum speed (rpm)	5000	5000	5000
	Spindle nose	ASA 6"A2	ASA 6"A2	ASA 6"A2
	Maximum bar diameter	52	52	52
	Chuck diameter	175	175	175
	Spindle power (kW) (S2 30min/S1)	11/7,5	11/7,5	11/7,5
Turning torque (Nm) (S2 30min/S1)	100/67	100/67	100/67	
TURRET	Number of positions	12	12	12
	Number of index positions	24	24	24
	Maximum turning speed (rpm)	6000	6000	6000
	Maximum power (kW)	18	18	18
WEIGHT	Maximum torque (Nm)	52	52	52
	Total weight (kg)	9600 (*)	9600 (*)	9600 (*)

(*) Approximate weights.

Due to constant development of our products all specifications given here in are subject to change without notice.

TTL SERIES

**MULTI-TURRET
MACHINES
DESIGNED FOR
HIGH PRODUCTION**

TTL SERIES

TTL 52 / TTL 66 MODEL

MACHINE WITHOUT BELTS

2 TURRETS
3 TOOLS

12,000 rpm / 14 Kw / 42 Nm



TTL-GL20II MODEL

GANTRY ROBOTS
FOR BILLETS
AND SHAFTS



TECHNICAL DATA

	TTL-52-52			TTL-52-66			TTL-66-52			TTL-66-52		
	T1-T2	T1M-T2M	T1Y-T2Y	T1-T2	T1M-T2M	T1Y-T2Y	T1-T2	T1M-T2M	T1Y-T2Y	T1-T2	T1M-T2M	T1Y-T2Y
GENERAL DATA												
Maximum turning diameter (mm)	220			220			220			220		
Distance between spindle nose and tailstock centre (mm)	614			614			614			614		
Distance between centres (mm)	800			800			800			800		
SPINDLE												
Maximum speed (rpm)	4500			4500			4000			4000		
Spindle nose	ASA 6" A2			ASA 6" A2			ASA 6" A2			ASA 6" A2		
Chuck diameter (mm)	175 / 210			175 / 210			210			210		
Maximum bar diameter (mm)	56 / 52			56 / 52			66			66		
Spindle power (kW) (max./S2 25%/ S1)	35,5 / 28,3 / 23,5			35,5 / 28,3 / 23,5			35,5 / 28,3 / 23,5			35,5 / 28,3 / 23,5		
Turning torque (Nm) (max./S3 25%/ S1)	205 / 180 / 150			205 / 180 / 150			205 / 180 / 150			205 / 180 / 150		
TURRET												
Number of positions	12			12			12			12		
Number of index positions	24			24			24			24		
DRIVEN TOOLS												
Turning speed (rpm)	-	12000		-	12000		-	12000		-	12000	
Power (kW) (max./S1)	-	14 / 10		-	14 / 10		-	14 / 10		-	14 / 10	
Maximum torque (Nm) (max./S1)	-	42 / 32		-	42 / 32		-	42 / 32		-	42 / 32	
WEIGHT												
Total weight (kg)	11000			11000			11000			11000		

(*) Approximate weights.

Due to constant development of our products all specifications given here in are subject to change without notice.

CMZ, THE POWER OF A MANUFACTURER

CMZ have been manufacturing machine tools for more than 70 years. Being part of an ever-changing sector has forced us to reinvent ourselves, renew and improve our production processes.

We continuously strive to produce the best CNC lathes we can. Built with a focus on precision and performance at a competitive price, we produce strong, reliable machines that offer longevity and continued machining accuracy. **Practically all of our parts are produced at the various manufacturing plants within our group.** This has helped us to acquire a very broad and professional vision of the product.

Together with more than **300 people** and **32,000 square metres** of facilities, we deliver almost **three machines per day** to customers throughout Europe.

HEADQUARTERS

CMZ HEADQUARTERS



CENTRAL SERVICES | TECHNICAL ASSISTANCE SERVICE
Zaldibar – Spain

CMZ France



COMMERCIAL OFFICE | TECHNICAL ASSISTANCE SERVICE | SHOWROOM
Vaulx Milieu – France

CMZ UK



COMMERCIAL OFFICE | TECHNICAL ASSISTANCE SERVICE
Rugby – United Kingdom

CMZ Germany



COMMERCIAL OFFICE | TECHNICAL ASSISTANCE SERVICE
Stuttgart – Germany

CMZ Italy



COMMERCIAL OFFICE | TECHNICAL ASSISTANCE SERVICE | SHOWROOM
Milan – Italy



European official distributors:
Switzerland, Sweden, Finland,
Norway, The Netherlands,
Denmark, Austria

MANUFACTURING PLANTS

CMZ ASSEMBLY PLANT 1



CNC lathes Assembly plant
5,500 m² | Zaldibar – Spain

CMZ ASSEMBLY PLANT 2 | SEUNER



CNC lathes Assembly plant
10,000 m² | Mallabia – Spain

MECANINOR



Machining plant
4,900 m² | Elorrio – Spain

PRECITOR



Machining plant
970 m² | Elorrio – Spain

MEYDI



Assembly plant for electrical cabinets
1,250 m² | Zaldibar – Spain

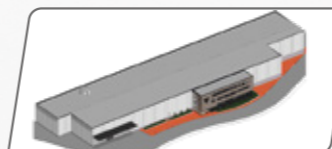
CAFISUR



Industrial boiler company
15,000 m² | Cádiz – Spain

COOMING SOON

NEOPREC



New machining plant equipped with FMS, automatic storage and the latest technologies.

NEW

PRECITOR

Expansion of our machining plant, Precitor.

#wearecmz

CMZ Deutschland GmbH

Holderäckerstr. 31
70499 Stuttgart (Germany)
Tel. +49 (0) 711 469204 60
info-de@cmz.com
www.cmz.com

CMZ France SAS

Parc Technologique Nord
65, Rue Condorcet
38090 Vaulx Milieu (France)
Tel. +33 (0) 4 74 99 03 22
contact@cmz.fr
www.cmz.com

CMZ Italia S.r.l.

Via Arturo Toscanini 6
20020 Magnago (Mi) Italy
Tel. +39 (0) 331 30 87 00
info-it@cmz.com
www.cmz.com

CMZ Machinery Group S.A.

Azkorra s/n.
48250 Zaldibar (Vizcaya-Spain)
Tel. +34 94 682 65 80
info@cmz.com
www.cmz.com

CMZ UK Ltd.

6 Davy Court
Central Park
Rugby
CV23 0UZ (United Kingdom)
Tel. +44 (0) 1788 56 21 11
info-uk@cmz.com
www.cmz.com



Distributor

CMZ Machine Tool Manufacturer, S.L.

Azkorra, s/n.
48250 Zaldibar (Vizcaya-Spain)
Tel. +34 946 826 580
info@cmz.com
www.cmz.com